

Upper Rudder Bearing-Standard



PRODUCT OVERVIEW

Australasia/Pacific

Contact Dave: +61 402 062 449

info@tidesmarine.com.au

www.tidesmarine.com.au



The TidesMarine Upper Rudder Bearing-Standard (URB-STD) is designed to be mounted directly on top of the rudder shelf. It is an ABS- and Lloyds-approved, self-aligning design which accommodates up to 10 degrees of off-axis alignment between the mounting surface (rudder shelf) and the rudder stock. As a result, it requires no shimming during installation and won't load the rudder shaft during vessel operation.

The URB-STD is lighter than conventional bronze units. It consists of a UHMW ball-type bearing captured within a UHMW housing. The ball-type bearing is designed with shoulder at the top to accept a rudder collar, allowing the unit to effectively carry rudder "download" during vessel operation.

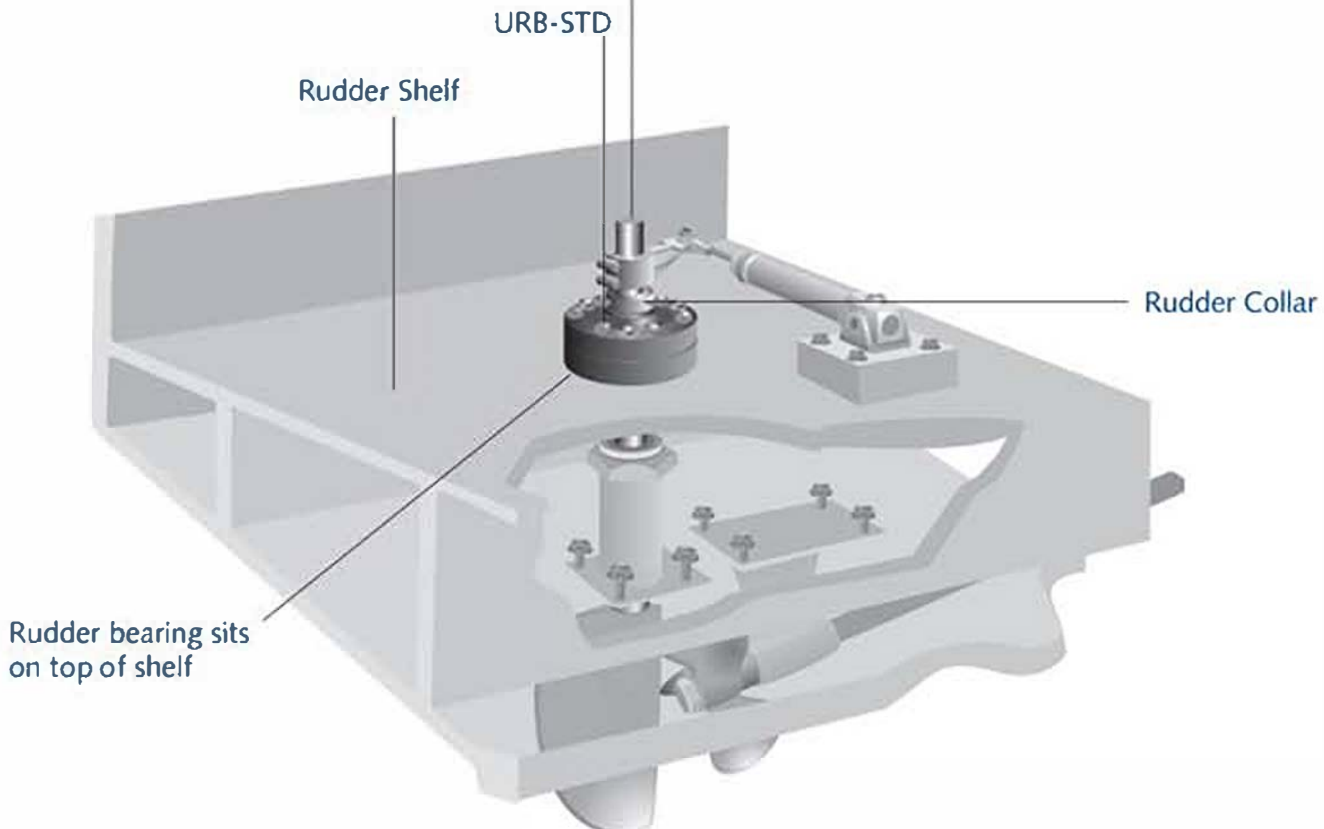
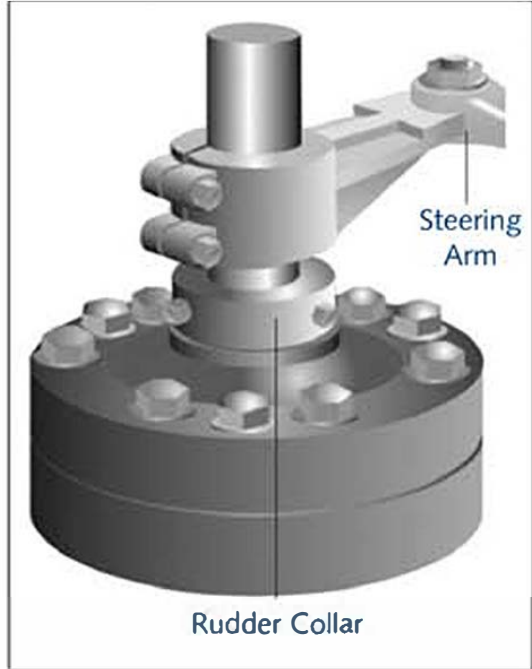
The Tides design eliminates metal-to-metal contact and the associated problems of abrasion, electrolysis and corrosion. The URB-STD is self-lubricating and maintenance free. Steering is smoother and quieter. Minor mounting adjustments to the rudder system's steering components may be necessary if the height of the unit is different than the metal pillow-block style bearing it is replacing.

Upper Rudder Bearing-Standard

PRODUCT OVERVIEW

Bronze Rudder Stock Note:

Bronze rudder stock diameters may run slightly under nominal. If necessary, Tides will machine the bore of the ball-type bearing to match your installation accordingly.



Upper Rudder Bearing-Standard

BEFORE ORDERING

Before placing your order, there are several measurements you need to take/confirm.

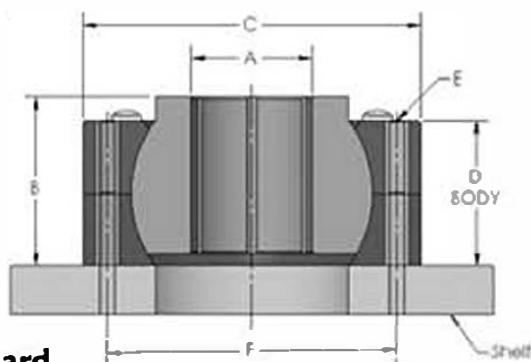
Find the exact outside diameter of your rudder stock to three decimals (.000").

Locate this rudder stock size in Column A of the table below.

Then, note the corresponding assembly height in Column "B" of the table. Verify there is enough room between the rudder shelf and the deck (or any miscellaneous structures) above to install the unit (generally 2 x the overall height of the URB-STD). If height restrictions exist, the URB-LP (page 6 in this catalog) may be a better choice.

Next, confirm there is sufficient clear space around the rudder stock on the rudder shelf for the URB-STD that fits your boat. Measurement C in the diagram and the table should be used for this purpose.

Finally, check the position and mounted height of the other steering components to determine if any adjustment will be necessary once the URB-STD is in place.



Upper Rudder Bearing-Standard Specifications (dimensions in inches)

RUDDER STOCK OD	ASSEMBLY HEIGHT	ASSEMBLY DIAMETER	BODY HEIGHT	# OF BOLTS IN FLANGE	BOLT HEIGHT	PART NUMBER
A	B	C	D	E	F	
1	2 3/8	5	1 3/4	6	4	URB-STD-1000
1 1/4	2 3/8	5	1 3/4	6	4	URB-STD-1250
1 3/8	2 3/8	5	1 3/4	6	4	URB-STD-1375
1 1/2	2 3/8	5	1 3/4	6	4	URB-STD-1500
1 3/4	2 3/8	5	1 3/4	6	4	URB-STD-1750
1 7/8	3 1/4	6	2 1/2	6	5	URB-STD-1875
2	3 1/4	6	2 1/2	6	5	URB-STD-2000
2 1/4	3 1/4	6	2 1/2	6	5	URB-STD-2250
2 1/2	3 1/2	7	3	6	6	URB-STD-2500
2 3/4	4 3/4	8	3 1/2	8	7	URB-STD-2750
3	4 3/4	8	3 1/2	8	7	URB-STD-3000
3 1/4	4 3/4	8	3 1/2	8	7	URB-STD-3250
3 1/2	4 3/4	8	3 1/2	8	7	URB-STD-3500
4	4 3/4	9	4	6	7 1/2	URB-STD-4000
4 1/2	5 1/2	10	4 1/4	6	8 3/4	URB-STD-4500
5	5 1/2	10	4 1/4	6	8 3/4	URB-STD-5000
5 1/2	5 1/2	11	4 1/4	6	9 1/2	URB-STD-5500

If you are replacing a standard part (ex: URB-STD-1000), please specify its size/configurations when ordering because there are numerous variations for the same shaft size. You may not have the standard model.